

VERONICA BEADED GRASSCLOTH

CARBON • SC 0004 WP88386

Embroideries, Grasscloths, Specialities / Metallics from the Kingsley Collection by Scalamandre



APPROX. MATERIAL 36" / 91.44 cm
WIDTH

APPROX. REPEAT . . HORIZONTAL 36" / 91.44 cm

MATCH STRAIGHT

CONTENT 40% BEADS 30% GRASSCLOTH 30% PAPER
UNTRIMMED

HAND WOVEN & HAND BEADED
VARIATIONS ARE INHERENT
PANEL STRIPE, FULL WIDTH
PLAIN GROUND: SC 0012 WP88347

MADE IN INDIA

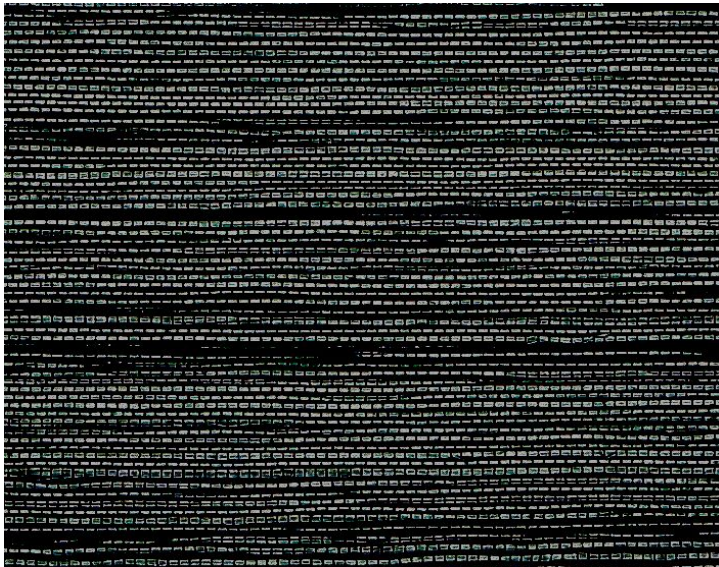
STOCKED IN. SCALAMANDRE WAREHOUSE U.S.A.

DESIGN IKAT
STRIPE

SCALE LARGE

DESIGN INSPIRATION

The hand-beaded stripes of Veronica Beaded Grasscloth shimmer like beams of light. Tiny, faceted glass beads are sewn to woven grasscloth in two 4" wide stripes spaced about 10" apart. Utilizing techniques specific to fabric embellishment, Veronica Beaded Grasscloth offers a look completely unique to the market. This breathtaking design adds panache to a grand foyer or dining room. Available in four metal-inspired colorways.



DETAIL IMAGE

To check stock and price, request a physical memo, reserve or place an order visit
www.redfromscalamandre.com or call at 1.800.932.4361.